



Datenblatt - Fiche technique - Data sheet

11.05.1006



Filter Ferrit-6,5

Filtre ferrite - 6,5mm

Filter Ferrite - 6.5 mm

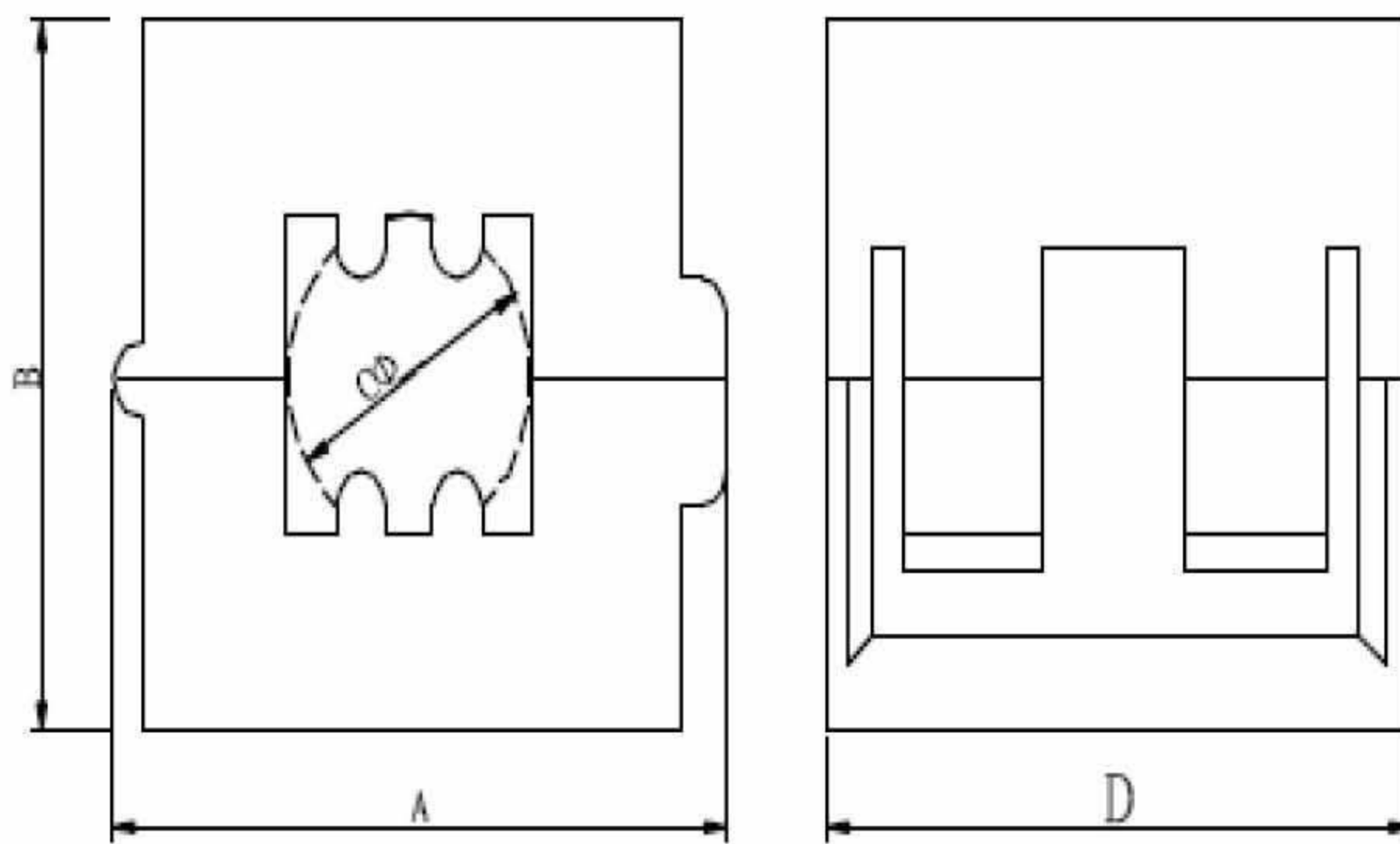


Item No.: 11.05.1006
Filter Ferrite 6.5mm

EMI suppressor Snap-on ferrite cores (for round cable)

FEATURE	<ul style="list-style-type: none"> Internal dimensions from 5mm to 15mm radius. Precision formed smooth surface prevent damage to wire insulation. Easy installation.
APPLICATION	<ul style="list-style-type: none"> Internal and external power cables. Internal cables between pc boards and data connectors, computer peripherals, digital camera, DVD, fax machine cables, monitor cables, power supply cables. Printer cables.

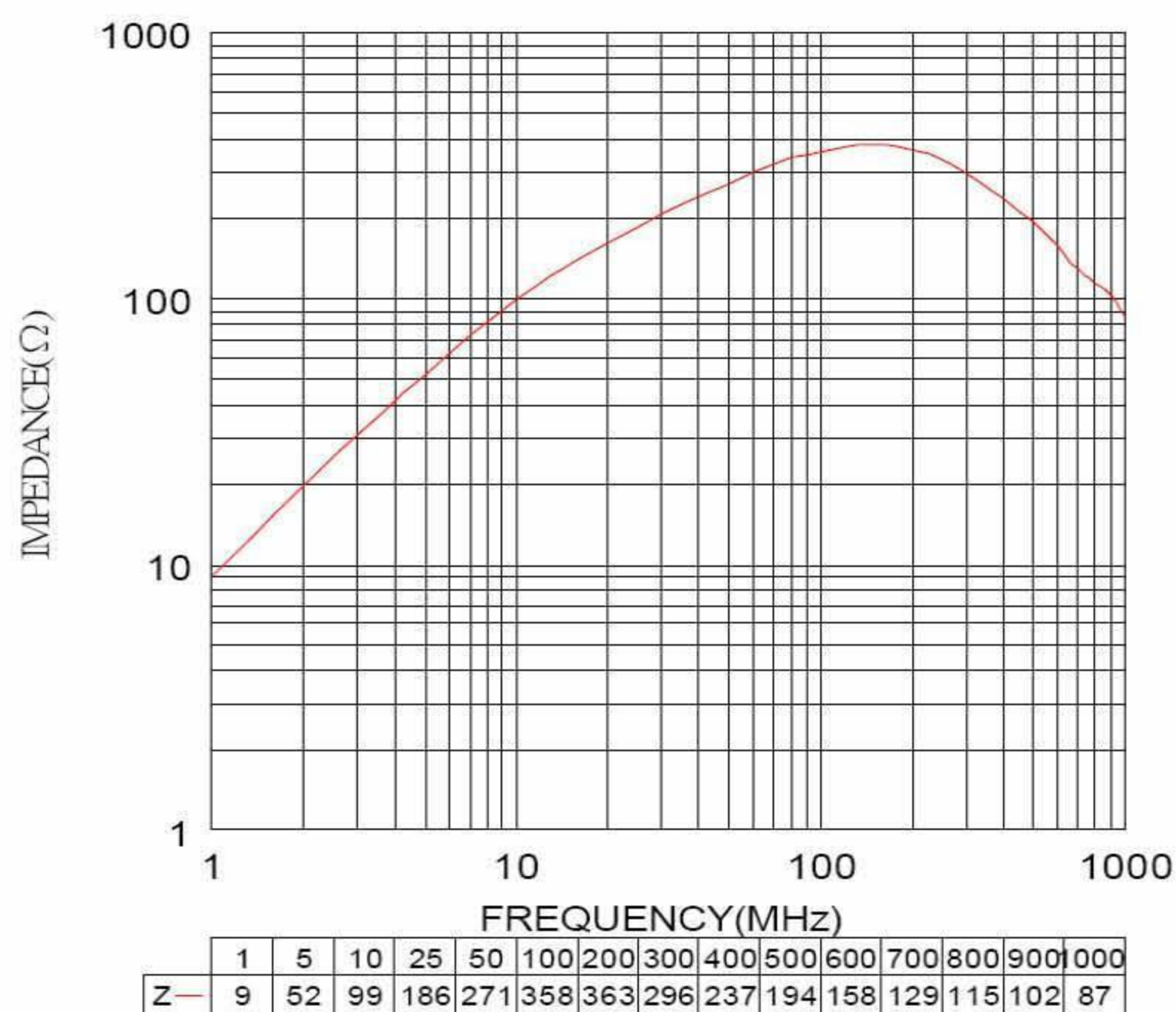
SHAPES (unit in mm)



Dimensions (Core Size) & Characteristics for LF series

ITEM	A	B	C	D	IMPEDANCE (Ω) min	
					25MHz	100MHz
11.05.1006	20.50 \pm 1.0	20.0 \pm 1.0	6.5 \pm 0.30	33.0 \pm 1.0	120	200

(Z , RS , XL) - f Curve LF series



(DATA BETWEEN 500MHz AND 1000MHz ARE FOR REFERENCE ONLY)